

Phycological Research

Volume 64 • Issue 3 • July 2016

Masahiro Mikawa, Koichi Sugimoto, Yoshimasa Amano, Motoi Machida and Fumio Imazeki <i>Competitive growth characteristics between Microcystis aeruginosa and Cyclotella sp. accompanying changes in river water inflow and their simulation model</i>	123
Piya Roychoudhury, Abhishek Bhattacharya, Anjan Dasgupta and Ruma Pal <i>Biogenic synthesis of gold nanoparticle using fractioned cellular components from eukaryotic algae and cyanobacteria</i>	133
Ninlawan Chotipan, Suwimon Boonrungsiman and Sataporn Direkbusarakom <i>Comparison of suitable protein measurement for Thalassiosira weissflogii (Bacillariophyta) and Tetraselmis chuii (Chlorophyta)</i>	141
Arjun Verma, Mona Hoppenrath, Tim Harwood, Steve Brett, Lesley Rhodes and Shauna Murray <i>Molecular phylogeny, morphology and toxigenicity of Ostreopsis cf. siamensis (Dinophyceae) from temperate south-east Australia</i>	146
Urban Tillmann and Rut Akselman <i>Revisiting the 1991 algal bloom in shelf waters off Argentina: Azadinium luciferelloides sp. nov. (Amphidomataceae, Dinophyceae) as the causative species in a diverse community of other amphidomataceans</i>	160
Ryogo Suzuki, Shuhei Ota, Tomokazu Yamazaki, Atsushi Toyoda, Satoko Nonaka, Chiaki Matsukura, Kazuyoshi Kuwano and Shigeyuki Kawano <i>Morphological changes of giant mitochondria in the unicellular to multicellular phase during parthenogenesis of Ulva partita (Ulvophyceae) revealed by expression of mitochondrial targeting GFP and PEG transformation</i>	176
Samir El Atouani, Fouad Bentiss, Abdeltif Reani, Rachid Zrid, Zahira Belattmania, Leonel Pereira, Abdelhadi Mortadi, Omar Cherkaoui and Brahim Sabour <i>The invasive brown seaweed Sargassum muticum as new resource for alginate in Morocco: Spectroscopic and rheological characterization</i>	185
Fernando Gómez, Dajun Qiu, Ernesto Otero-Morales, Rubens M Lopes and Senjie Lin <i>Circumtropical distribution of the epiphytic dinoflagellate Coolia malayensis (Dinophyceae): Morphology and molecular phylogeny from Puerto Rico and Brazil</i>	194
Ruixue Yu, Apeng Lin, Xiujun Xie, Hui Wang, Fu Zhang, Guangzhou Liu, Guangce Wang and Cunguo Lin <i>Importance of coalescent development of Gracilaria sp. tetraspores</i>	200
Corrigendum	204

Phycological Research

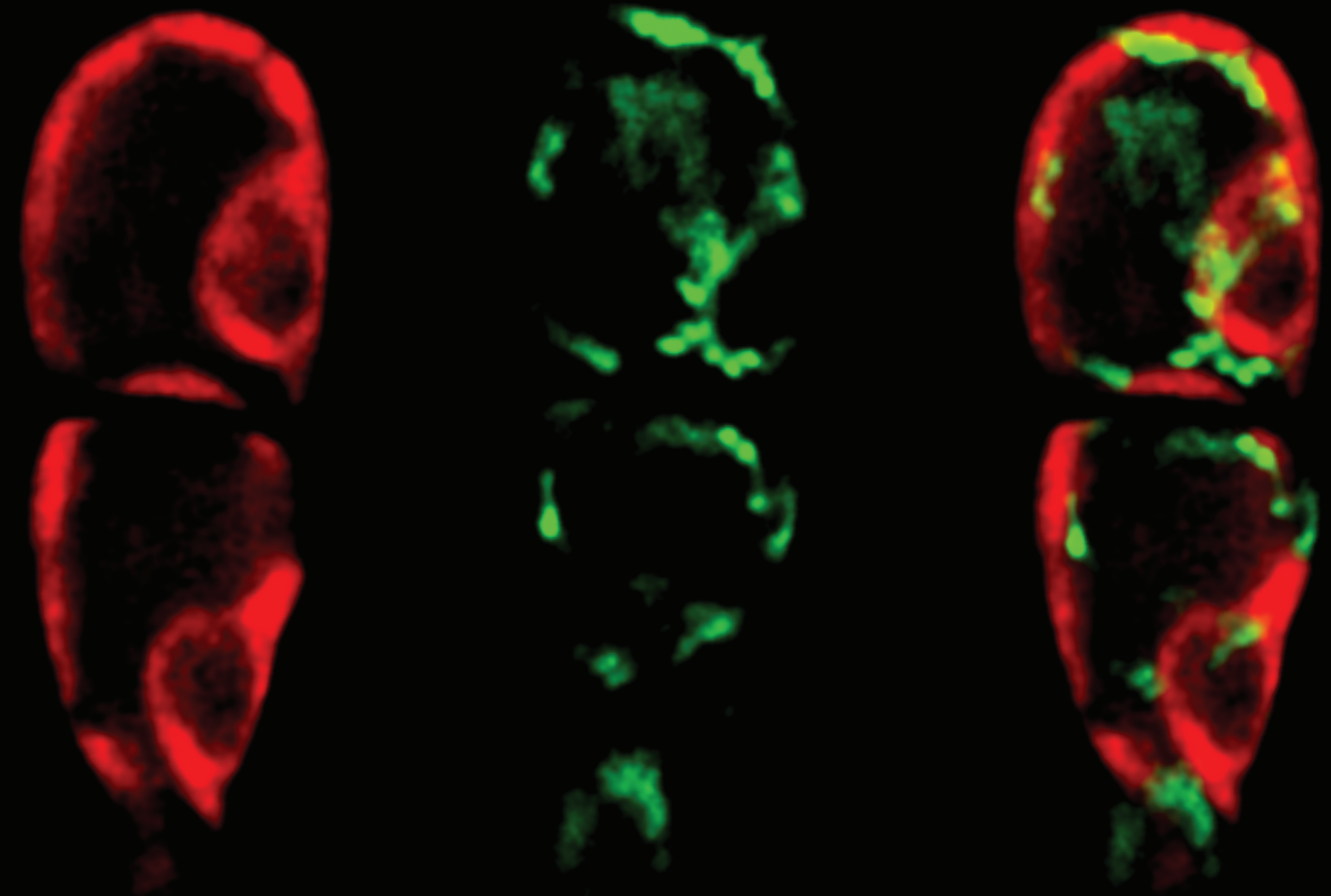
Volume 64 • Issue 3 • July 2016

ISSN 1322-0829

Phycological Research

Volume 64, Issue 3, July 2016, Pages 121-204

WILEY



WILEY

The Japanese Society of Phycology

The Japanese Society of Phycology

Officers for 2015–2016

President: Jiro Tanaka *Tokyo University of Marine Science and Technology, Japan*
Secretary: Hidekazu Suzuki *Tokyo University of Marine Science and Technology, Japan*
Treasurer: Takanori Matsuoka *Nippon Dental University, Tokyo, Japan*
Membership Secretary: Satoko Sekida *Kochi University, Japan*; Shin-ichiro Abe *Ibaraki University, Japan*
Public Relations Secretary: Takashi Nakada *Keio University, Japan*
Secretary for International Affairs: Shin-ichiro Abe *Ibaraki University, Japan*

Members of Executive Council 2015–2016

Sung Min Boo *Chungnam National University, Korea*
Daisuke Fujita *Tokyo University of Marine Science and Technology, Japan*
Masahiko Idei *Bunkyo University, Japan*
Masanobu Kawachi *National Institute for Environmental Studies, Japan*
Shigeo Kawaguchi *Kyushu University, Japan*
Hiroshi Kawai *Kobe University, Japan*
Akira Kurashima *Mie University, Japan*
Ichiro Mine *Kochi University, Japan*
Shinichi Miyamura *University of Tsukuba, Japan*
Hideaki Miyashita *Kyoto University, Japan*
Taizo Motomura *Hokkaido University, Japan*
Daisuke Muraoka *Tohoku National Fisheries Research Institute, Japan*
Tamotsu Nagumo *The Nippon Dental University, Japan*
Takeshi Nakayama *University of Tsukuba, Japan*
Wendy A. Nelson *The National Institute of Water and Atmospheric Research, New Zealand*
Shuji Ohtani *Shimane University, Japan*
Yoshihiko Sakanishi *Japan Sea National Fisheries Research Institute, Japan*
Ryuta Terada *Kagoshima University, Japan*
Giuseppe C. Zuccarello *Victoria University of Wellington, New Zealand*

JOIN THE JAPANESE SOCIETY OF PHYCOLOGY AND RECEIVE FOUR ISSUES OF PHYCOLOGICAL RESEARCH PER YEAR FREE OF CHARGE

The Japanese Society of Phycology, founded in 1952, currently has 685 members (including 68 overseas members). The Society is open to anyone who is interested in pure or applied aspects of phycology.

Application for membership

(Please type or write in block letters) Membership starts from 2014

Name in full: _____
(Family name) (Given name and initials)

Mailing address: _____

(Postal code) (Country)

Telephone: _____ Fax: _____

E-mail: _____ Interests: _____

Signature: _____ Date: _____

**The annual fee for individual members is ¥8000
(¥7000 for members who reside outside Japan, ¥5000 for students who submit a verifying statement signed by their Chairperson or Head of Department)**

Payment by: Visa MasterCard American Express

Card number: _____ - _____ - _____ - _____ Expiry date: _____

Signature: _____

International postal money order

Send application form to: Shin-ichiro ABE
College of Education,
Ibaraki University,
2-1-1, Bunkyo, Mito,
Ibaraki 310-8512, Japan
PHONE & FAX: +81-29-228-8446
Email: shinabe@mx.ibaraki.ac.jp